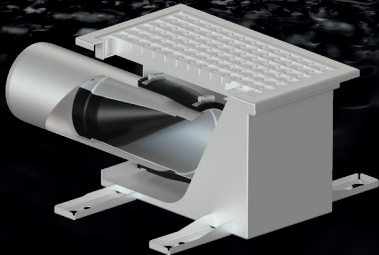




INSTALLATION INSTRUCTIONS & PRODUCT GUARANTEE



WASTOP® FLOOR DRAIN
incl. WaStop Inline check valve DN110 / NPS 4"
and flexible coupling

Please note your product serial number:



PEACE OF MIND WITH WASTOP® FLOOR DRAIN

THANK YOU FOR PURCHASING A WAPRO PRODUCT. FOR FURTHER PRODUCT INFORMATION PLEASE REFER TO WAPRO.COM

INDEX

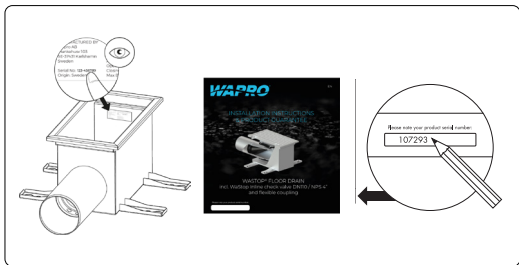
SAFETY FIRST	2
SERIAL NUMBER	2
FLOOR TYPE	2
SECURING AND CONNECTION	3
IMPORTANT	3
TILING	4
WASTOP INSTALLATION IN THE FLOOR DRAIN	5
GENERAL INFORMATION ABOUT STAINLESS STEEL	5
MAINTENANCE	6
WARRANTY	7-8

SAFETY FIRST



SERIAL NUMBER

Please note your product serial number and scan QR-code

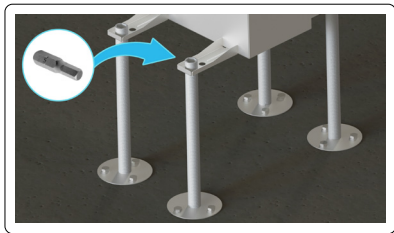


FLOOR TYPE

Ceramic tile floor K3 and steel-troweled concrete floor

SECURING AND CONNECTION

- Secure the floor drain with legs in the mounting lugs
- Install the floor channel horizontally and ensure that it is firmly mounted so that it does not shift during casting or due to movements between the floor drain; adjust horizontally
- Secure the top part of the channel to the correct floor height! It might be challenging to do after the pour
- Connect the drain pipe
- Vibrate the concrete thoroughly beneath the floor drain, including the edges

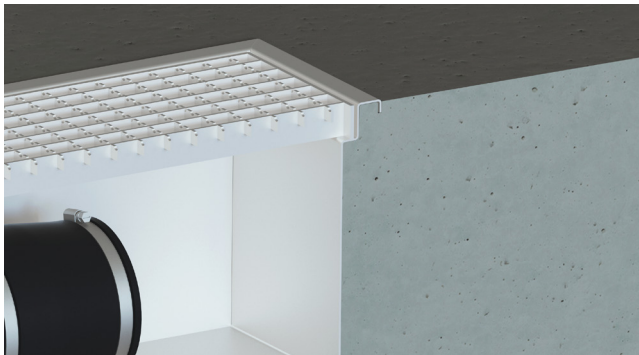


IMPORTANT

- Protect the floor channel from concrete spills. Clean immediately in case of concrete spills
- Protect the floor channel from sparks from the angle grinder and welding

TILING

- Lay the tiles in adhesive mortar with cement slurry or bonding agent
- Ensure that the concrete/adhesive mortar fully fills the space beneath the floor drains metal parts
- The joint between tiles and floor drain should be made with the same material as between the tiles and with a high-quality flexible joint



WASTOP INSTALLATION IN THE FLOOR DRAIN

- Attach the flexible coupling on the WaStop
- Insert the WaStop into the pipe until the flexible coupling stops
- Tighten the flexible coupling

GENERAL INFORMATION ABOUT STAINLESS STEEL

The stainless material retains its surface and corrosion resistance only if kept clean. Use warm water and soap or a mild detergent, followed by rinsing with clean water. To prevent discoloration:

- Wipe or rinse off acidic substances.
- Do not place iron products in contact with stainless steel.
- Avoid grinding or welding steel and iron products near stainless material.

MAINTENANCE

The WaStop Floor drain shall be inspected for damage and wear and also cleared of debris and sediment at least once a year or as needed to ensure the capacity of the sand trap.

FLEXIBLE COUPLING

Check the flexible coupling or pipe to make sure they have not loosened during operation.

MEMBRANE

The membrane should be exercised by hand. Take caution not to damage the WaStop. Use only stainless steel tools to minimize the risk of contaminating the stainless steel. If there is any damage to the valve, contact your WaStop supplier with product serial number, purchase date, photos and information about the installation conditions.

MAINTENANCE



Approx 2x/ year or as required

CONGRATULATIONS ON YOUR PURCHASE OF THE UNIQUE WASTOP FLOOR DRAIN

The WaStop Floor drain is designed to ensure that property owners never have to worry about basement flooding or damage to their belongings during heavy rainfall or melting periods. When back pressure occurs from the drainage system and water flows back towards the floor drain, the WaStop Inline check valve prevents water from rising out of the well and further into the property through the door. This ensures that the property remains dry and protected from flooding.

SAFETY FIRST

When installing a WaStop Floor drain please ensure that all safety precautions are taken. Wapro AB accepts no responsibility for incorrect installation or the improper use of this product. Incorrect installation can cause injury, reduce the valve lifetime or damage other mating pipe products. Please read the following information before installing the WaStop Floor drain. If you have any questions regarding installation please call your local WaStop Floor drain reseller.

STORAGE

- The WaStop Floor drain valve should be stored in a cool dry location with good ventilation
- The WaStop Floor drain should not have anything inserted into either end touching the membrane during storage
- The WaStop Floor drain should be stored in a safe location where tampering cannot occur
- Avoid unnecessary exposure to light and chemicals

TERMINOLOGY

Membrane: The conical elastomer membrane inside the WaStop pipe

WAPRO AB LIMITED WARRANTY

Wapro will remedy defects in material and/or workmanship in any new Wapro valve for a period of two (2) years from the documented date of purchase so long as the valve has been used in accordance with Wapro's instructions and recommendations and under normal operating conditions. The warranty does not cover damage to the valve caused by external mechanical forces, such as interference from humans, animals or machines, nor is the warranty valid if the valve has been modified or altered in any way post-production. Furthermore, the warranty is not valid (a) if the valve is damaged due to exposure to high concentrations of chemical substances, (b) if the valve is damaged due to pressure surges and/or vacuum within the valve, (c) the warranty is invalid if flow velocity exceeds 1,5m/s (12 l/s), and (d) if malfunctions are caused by other equipment. To request warranty service, the buyer should contact the WaStop dealer where the valve was purchased within a reasonable time after discovering any defects. The valve serial number must be quoted in the case of a warranty claim. Wapro's liability is limited to the replacement or repair of the defective valve. Wapro will not assume costs incurred for removal of defective valves or subsequent installation of replacement valves. Furthermore, Wapro will not assume transportation costs of damaged valves or replacement valves. Wapro warrants that repaired or replaced valves are covered for the greater of either the remainder of the original valve warranty or 90 days.

THE WARRANTY EXPRESSED ABOVE SHALL BE IN LIEU OF ANY OTHER WARRANTIES, EXPRESSED OR IMPLIED, INCLUDING, WITHOUT LIMITATION, ANY IMPLIED WARRANTIES OR CONDITIONS OF MERCHANTABILITY, FITNESS FOR A PARTICULAR PURPOSE AND NON-INFRINGEMENT WHICH ARE EXPRESSLY DISCLAIMED, AND IS IN LIEU OF ANY AND ALL OTHER OBLIGATIONS OR LIABILITY ON WAPRO'S PART. TO THE MAXIMUM EXTENT PERMITTED BY APPLICABLE LAW, UNDER NO CIRCUMSTANCES WILL WAPRO BE LIABLE TO BUYER FOR ANY INDIRECT, INCIDENTAL, SPECIAL OR CONSEQUENTIAL DAMAGES (INCLUDING ANY DAMAGE FOR LOSS OF REVENUE OR PROFIT), OR OTHERWISE ARISING OUT OF OR IN CONNECTION WITH FURNISHING OF THE VALVES, PARTS OR SERVICE HEREUNDER, OR THE PERFORMANCE, USE OF, OR INABILITY TO USE ANY OF THE VALVES, PARTS OR SERVICE, OR OTHERWISE, WHETHER BASED IN CONTRACT, WARRANTY, TORT, INCLUDING WITHOUT LIMITATION, NEGLIGENCE OR ANY OTHER LEGAL OR EQUITABLE THEORY. TO THE MAXIMUM EXTENT PERMITTED BY APPLICABLE LAW, THE REMEDIES SET FORTH IN THIS LIMITED WARRANTY SHALL APPLY EVEN IF SUCH REMEDIES FAIL THEIR ESSENTIAL PURPOSE. FOR THE AVOIDANCE OF DOUBT, NO EMPLOYEE, AGENT OR OTHER REPRESENTATIVE OF WAPRO IS AUTHORIZED TO EXTEND OR OTHERWISE MODIFY THE WARRANTY SPECIFIED HEREIN.



HOLDING BACK THE FLOOD

Wapro solutions protect against stormwater and backflow flooding
Protecting people and property

CONTACT WAPRO

customerservice@wapro.com
wapro.com

SE: +46 (0)454 185 10
DK: +45 64 82 40 00
US: +1 888 927 8677
UK: +44 114 308 0123
DE: +49 (176) 805 509 53

A large, stylized graphic of a leaf or petal, composed of several overlapping, curved lines in a light blue color. It is positioned in the bottom right corner of the page.

Rev 1.0